

# SPIFE TOUCH

Alkaline Phosphatase

CK Isoenzymes

SPIFE Proteins

SPIFE Cholesterol

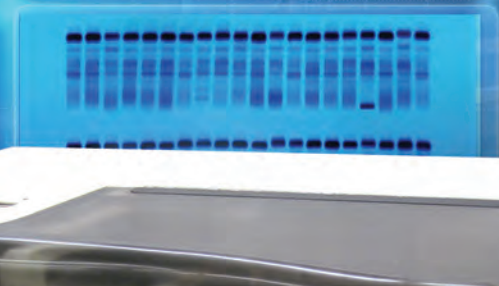
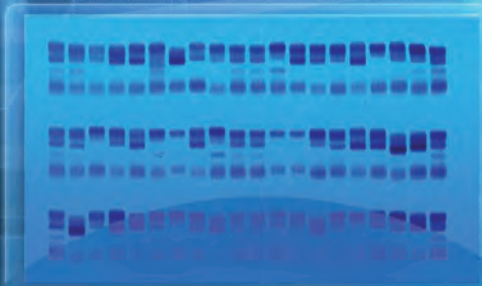
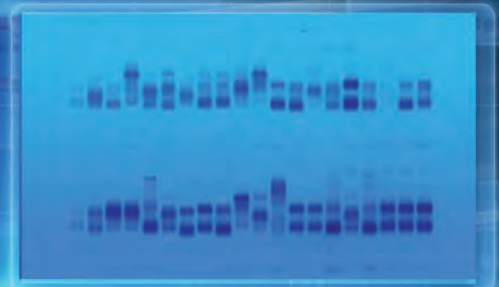
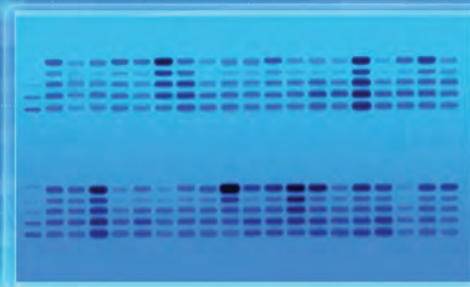
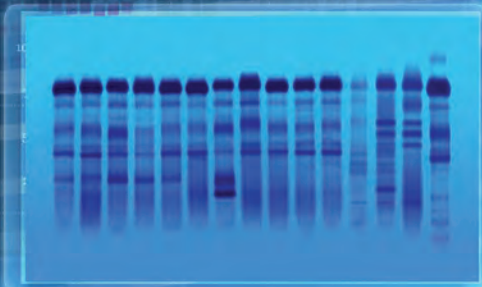
Lipoproteins

Hi-Res Proteins

Hi-Res Proteins

LD Isoenzymes

SPIFE ImmunoFix



# INTRODUCING

# SPIFE TOUCH

## The Nucleus of the New Helena Touch Electrophoresis System

**Smaller. Faster. Touch screen.**

**Versatile.** Those are the design specs behind all the Touch Series analyzers. SPIFE Touch builds on the proven track record of the SPIFE agarose gel electrophoresis analyzer, but is 30% faster, uses lower stain and destain volumes and has a touch screen user interface.

**SPIFE Touch** can handle the full menu of SPIFE assays and integrates seamlessly with the new ESH Touch sample handler and the QuickScan Touch densitometer. Together, the Touch Series can handle the needs of most laboratories, even those with the highest volumes and most complex patient populations.



### ▶ Touch Screen

Easy to use interface for test selection and customization of parameters

### 30% Faster

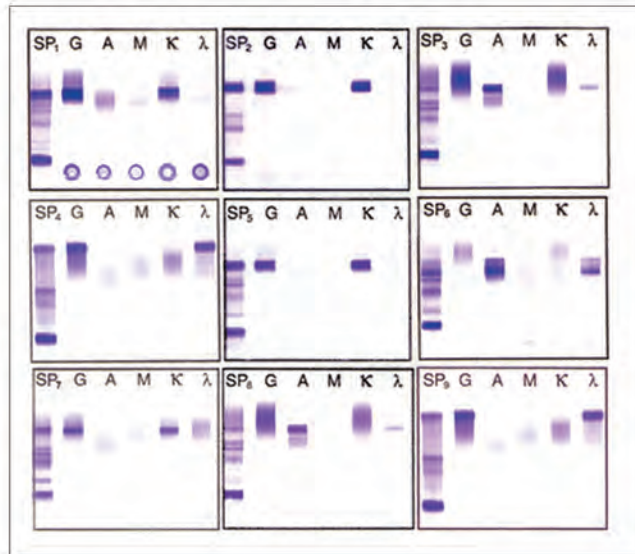
Faster processing and organized workflow means greater efficiency over previous generations of SPIFE and other brands of electrophoresis analyzers.

### Positive ID

Integrates with ESH Touch for positive ID of patient samples and electrophoresis gel.

### Accurate Sampling

Up to 100 samples per agarose gel are precisely applied. New applicator blades provide fast, clean and accurate sampling.



## ▶ SPIFE ImmunoFix

- Tight crisp bands for easier interpretation
- Simple multi-channel antisera application
- Antisera balanced for highest sensitivity with least blush
- Gel sizes for every workload – from one profile to 15

Cat. No. 3408 - 15 profile  
 Cat. No. 3409 - 9 profile  
 Cat. No. 3401 - 6 profile  
 Cat. No. 3406 - 3 profile  
 Cat. No. 3351 - 1/2 profile

## ▶ SPIFE Proteins

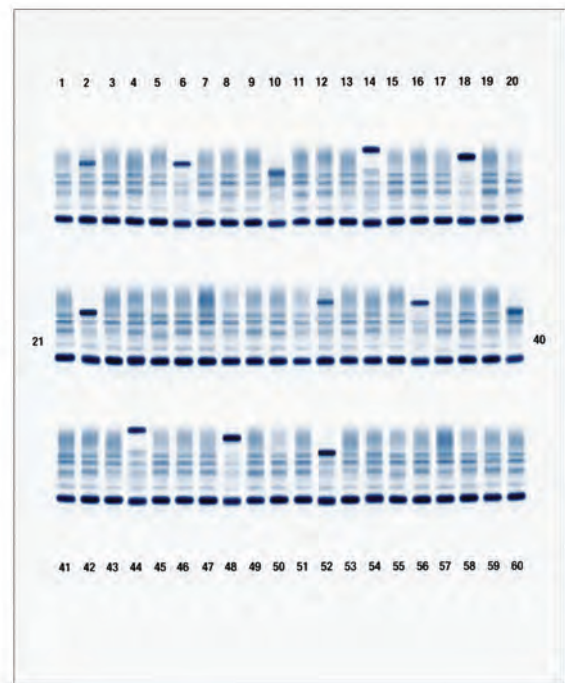
- Classic 5-band or split beta separations
- Superior resolution and sensitivity
- Serum applied neat: no concentration needed for urines
- Gel sizes for every workload – up to 100 samples per gel

### Split-Beta

Cat. No. 3398 - 100 sample  
 Cat. No. 3399 - 80 sample  
 Cat. No. 3420 - 60 sample  
 Cat. No. 3421 - 40 sample  
 Cat. No. 3422 - 20 sample  
 Cat. No. 3350 - 10/20 sample

### Classic

Cat. No. 3460 - 60 sample  
 Cat. No. 3461 - 40 sample  
 Cat. No. 3462 - 20 sample  
 Cat. No. 3405 - 10 sample



## Temperature Controlled

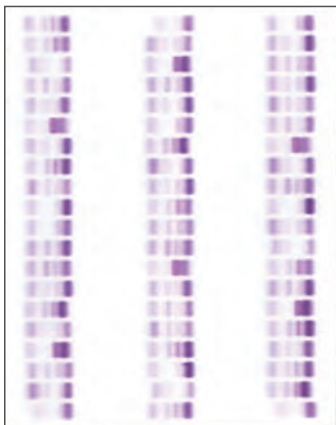
Peltier devices precisely regulate temperature to preserve sample integrity while providing crisp separations.

## Efficient Staining and Reagent Application

Reagent is automatically applied to gels for enzymatic assays while the online stainer provides auto staining and destaining of visible analytes.

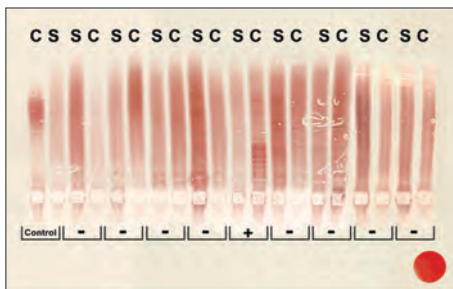
## Complete Menu

A full menu of analytes including proteins, IFEs, hemoglobins, direct cholesterol including Lp(a)-c, isoenzymes, lipoproteins and IgG IEF, plus multiple gel sizes provide great versatility.



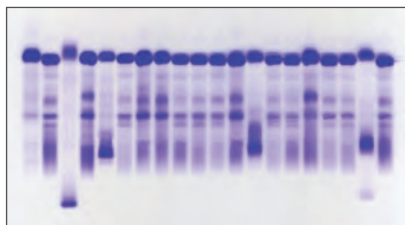
**Cholesterol Profile**

Cat. No. 3438 - 100 sample  
 Cat. No. 3439 - 80 sample  
 Cat. No. 3440 - 60 sample  
 Cat. No. 3441 - 40 sample  
 Cat. No. 3442 - 20 sample  
 Cat. No. 3443 - 10/20 sample



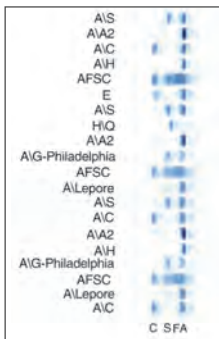
**IgG IEF for Multiple Sclerosis**

Cat. No. 3389 - 5/8 Profiles  
 Cat. No. 3385 - 10 Profiles



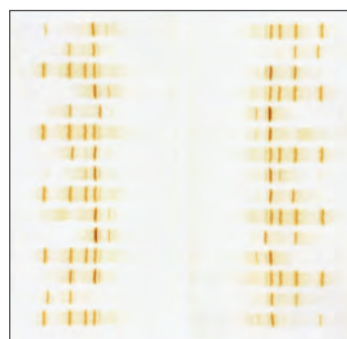
**HiRes Proteins**

Cat. No. 3430 - 20 sample



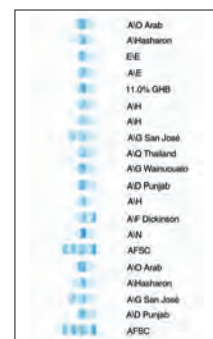
**Alk Hgb**

Cat. No. 3415 - 20 sample  
 Cat. No. 3429 - 10/20 sample



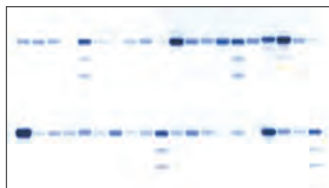
**Hgb IEF**

Cat. No. 3428 - 30 sample



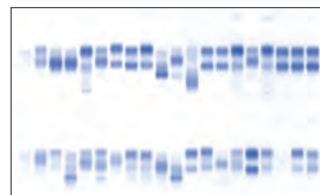
**Acid Hgb**

Cat. No. 3418 - 20 sample  
 Cat. No. 3419 - 10/20 sample



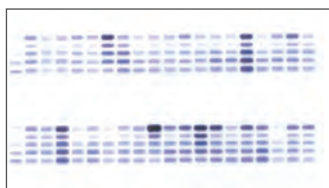
**CK Isoenzymes**

Cat. No. 3332 - 40 sample  
 Cat. No. 3333 - 20 sample  
 Cat. No. 3334 - 10/20 sample



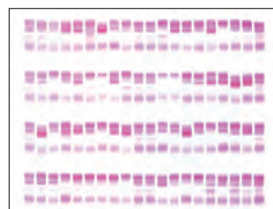
**Alkaline Phosphatase**

Cat. No. 3346 - 40 sample  
 Cat. No. 3345 - 20 sample



**LD Isoenzymes**

Cat. No. 3335 - 60 sample  
 Cat. No. 3336 - 40 sample  
 Cat. No. 3337 - 20 sample  
 Cat. No. 3338 - 10/20 sample



**Lipoproteins**

Cat. No. 3340 - 80 sample  
 Cat. No. 3341 - 60 sample  
 Cat. No. 3342 - 40 sample  
 Cat. No. 3343 - 20 sample

Specifications

**Displays:** Touchscreen  
**Timer Range:** 1 sec. to 99 min.  
 59 sec. in 1 second increments  
**Chamber Temperature Range:**  
 10° to 62°C (50° to 144°F)  
**Stainer Drying Temperature Range:**  
 30° to 90°C (86° to 194°F)  
**Input Power:**  
 Cat. No. 1068: 120 Vac, 50/60 Hz  
 Cat. No. 1069: 240 Vac, 50/60 Hz

**Dimensions:**  
 24" (61 cm) H x 39" (99 cm) W x 30" (76 cm) D  
**Weight:** 78 lb. (35 kg)  
**Operating Environment:**  
 15° to 27°C (59° to 81°F)  
 Optional Isolation Transformer Specifications  
**Input Voltage:** 120V (or 230V)  
**Output Voltage:** 120V (or 230V)  
**Power Range:** 2000 VA  
**Frequency:** 60 Hz (or 50 Hz)



www.helena.com | helena@helena.com

800-231-5663